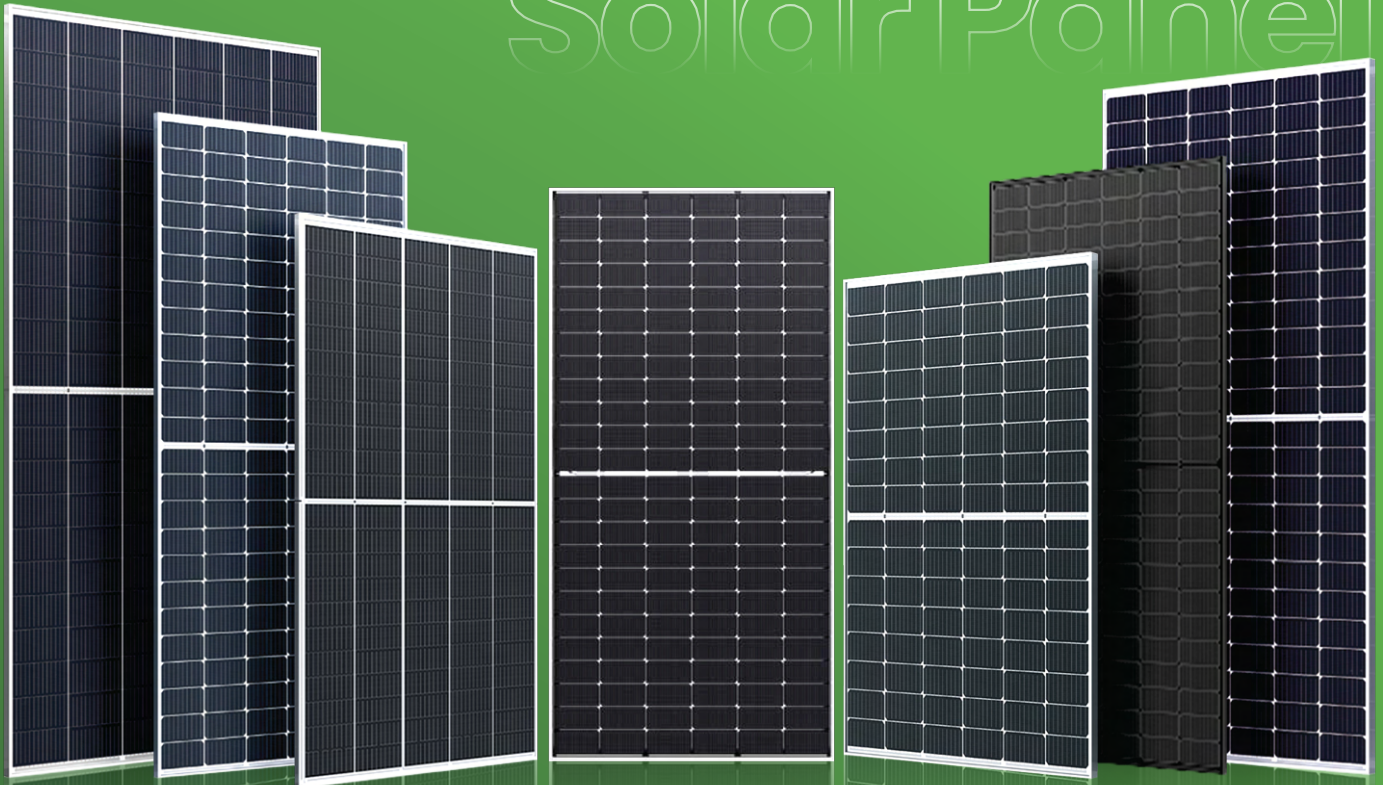


Monocrystalline Solar Panel



Solar Panels

P-Type Series

SOLAR PANEL PARAMETERS

| Peak Power | Module Voltage | Max. Power Voltage | Max Power Current | Open Circuit Voltage | Short Circuit Current | Module Efficiency | Module Size | N.W | Qty/ Pallet | Qty/ 40HQ | Total Weight/ 40HQ |
|------------|----------------|--------------------|-------------------|----------------------|-----------------------|-------------------|-----------------|---------|-------------|-----------|--------------------|
| 50W | 18V | 7V | 2.75A | 22.1V | 2.98A | 13.62 % | 680*540*25 mm | 4.1 kg | 88 Pcs | 6820 Pcs | 27962.00 kg |
| 100W | 18V | 33V | 5.49A | 22.3V | 6.02A | 14.96 % | 1005*665*30 mm | 7.5 kg | 36 Pcs | 3242 Pcs | 24314.52 kg |
| 150W | 18V | 40V | 8.06A | 22.3V | 8.53A | 18.4 % | 1240*665*30 mm | 9.3 kg | 36 Pcs | 2628 Pcs | 24436.09 kg |
| 260W | 30V | 30.8V | 8.44A | 37.8V | 8.9A | 16 % | 1640*992*35 mm | 19.1 kg | 31 Pcs | 1142 Pcs | 21803.35 kg |
| 315W | 30V | 33.4V | 9.44A | 41.1V | 9.96A | 19.2 % | 1640*992*35 mm | 19.1 kg | 31 Pcs | 1142 Pcs | 21803.35 kg |
| 200W | 36V | 37.6V | 5.32A | 45.3V | 5.64A | 16.84 % | 1200*990*35 mm | 14.7 kg | 31 Pcs | 1563 Pcs | 22979.80 kg |
| 300W | 36V | 37.8V | 7.93A | 45.3V | 8.43A | 18.3 % | 1640*992*35 mm | 19.1 kg | 31 Pcs | 1142 Pcs | 21803.35 kg |
| 375W | 36V | 40V | 9.37A | 48.5V | 9.88A | 19.38 % | 1956*992*40 mm | 21.2 kg | 40 Pcs | 837 Pcs | 17754.51 kg |
| 400W | 32V | 31.3V | 12.78A | 37V | 13.68A | 20.48 % | 1722*1134*30 mm | 21 kg | 36 Pcs | 1110 Pcs | 23300.50 kg |
| 450W | 42V | 41.9V | 10.74A | 50.1V | 11.38A | 20.74 % | 2094*1038*35 mm | 24 kg | 31 Pcs | 854 Pcs | 20506.07 kg |
| 480W | 38V | 38.15V | 12.58A | 45.1V | 13.46A | 20.25 % | 2094*1134*35 mm | 25 kg | 31 Pcs | 782 Pcs | 19552.20 kg |
| 500W | 38V | 38.63V | 13.08A | 45.6V | 13.99A | 21.10 % | 2094*1134*35 mm | 25 kg | 31 Pcs | 782 Pcs | 19552.20 kg |
| 550W | 42V | 42.13V | 13.05A | 49.8V | 13.97A | 21.32 % | 2279*1134*35 mm | 27 kg | 31 Pcs | 770 Pcs | 20790.00 kg |
| 585W | 42V | 43.7V | 13.38A | 52.5V | 14.10A | 22.67 % | 2279*1134*35 mm | 28 kg | 31 Pcs | 770 Pcs | 21560.00 kg |
| 600W | 46V | 46.17V | 13.00A | 55.4V | 13.69A | 21.43 % | 2465*1134*30 mm | 34 kg | 36 Pcs | 775 Pcs | 26353.67 kg |
| 685W | 40V | 39.8V | 17.98A | 47.7V | 18.2A | 22.10 % | 2384*1303*33 mm | 38.3 kg | 33 Pcs | 634 Pcs | 24285.53 kg |
| 685W | 40V | 40.9V | 17.36A | 49V | 18.40A | 22.90 % | 2384*1303*33 mm | 38.3 kg | 33 Pcs | 634 Pcs | 24285.53 kg |